

YEAR

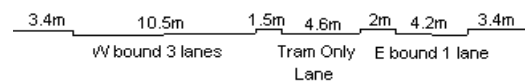
2015

LINK

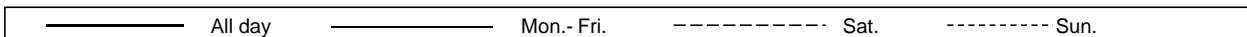
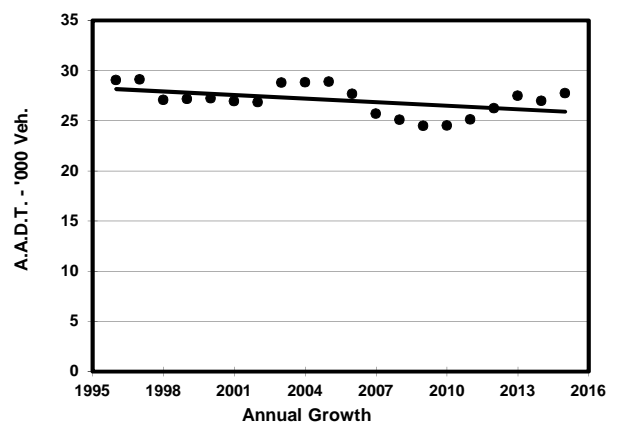
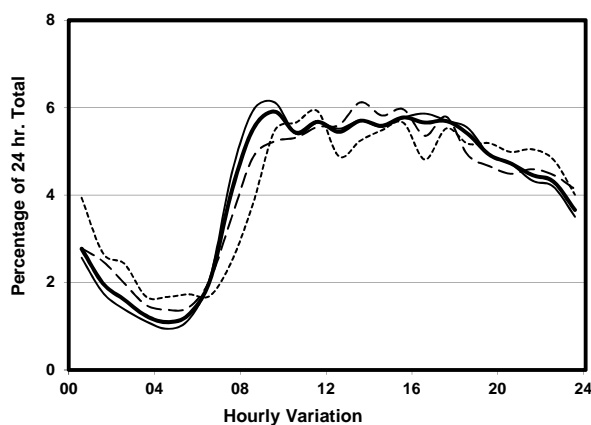
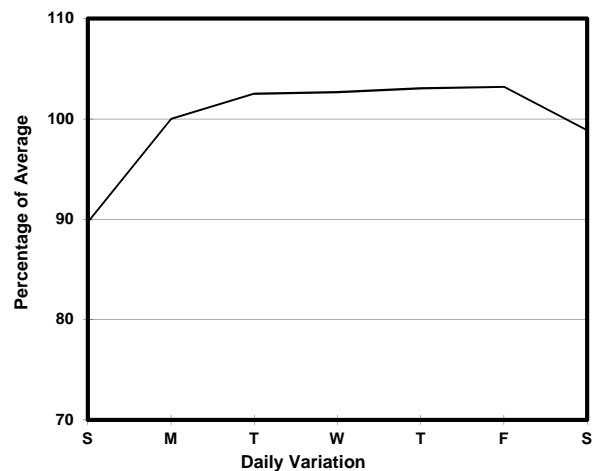
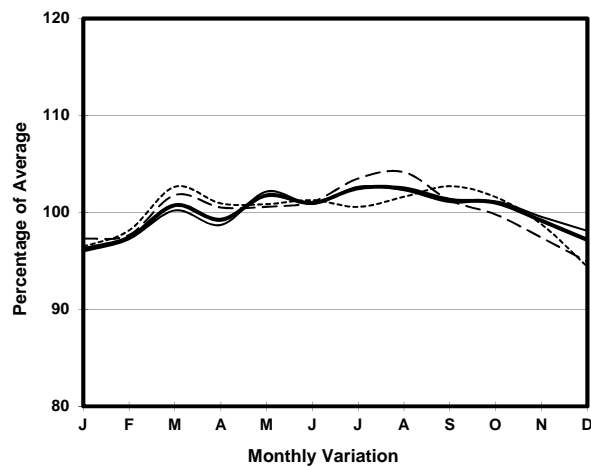
KING'S RD (from NORTH POINT RD to TONG SHUI RD)

CORE STATION
ROAD NETWORK
ROAD TYPE

1008
MAJOR
PRIMARY DISTRIBUTOR



1. TRAFFIC FLOW VARIATION AND GROWTH



2. TRAFFIC CHARACTERISTICS (BY DIRECTION)

Parameter	All - Day	Mon. - Fri.	Sat.	Sun.
EAST BOUND				
A.A.D.T.	4240	4330	4150	4070
R 12 / 24 - %	63.2	64.1	61.4	60.6
R 16 / 24 - %	83.7	84.2	83	82.3
AM Peak Hour	0900-1000	0900-1000	0900-1000	0900-1000
One-way flow at AM peak hour	220	230	210	200
T - % (AM)	-	-	-	-
PM Peak Hour	1600-1700	1600-1700	1600-1700	1800-1900
One-way flow at PM peak hour	240	260	220	240
T - % (PM)	-	-	-	-
Prop.of commercial vehicles - 16 hr.	-	-	-	-
WEST BOUND				
A.A.D.T.	23500	24200	23470	20940
R 12 / 24 - %	66.4	67.8	64.5	60.1
R 16 / 24 - %	84.4	85.7	82.1	79.8
AM Peak Hour	0900-1000	0900-1000	0900-1000	0900-1000
One-way flow at AM peak hour	1420	1510	1240	1170
T - % (AM)	-	-	-	-
PM Peak Hour	1700-1800	1600-1700	1700-1800	1700-1800
One-way flow at PM peak hour	1340	1410	1400	1180
T - % (PM)	-	-	-	-
Prop.of commercial vehicles - 16 hr.	-	-	-	-

3. OTHER INFORMATION AND COMMENT